

T M 1 1 - 6 1 2 5 - 2 4 6 - 3 4 P

**TECHNICAL MANUAL**

**DIRECT SUPPORT AND GENERAL SUPPORT MAINTENANCE  
REPAIR PARTS AND SPECIAL TOOLS LIST  
(INCLUDING DEPOT MAINTENANCE REPAIR PARTS AND SPECIAL TOOLS)  
FOR**

**MOTOR-GENERATOR PU-542/A  
(NSN 6125-00-888-3056)**

---

**HEADQUARTERS, DEPARTMENT OF THE ARMY  
JULY 1977**

**TECHNICAL MANUAL**  
No. 11-6125-246-34P

**HEADQUARTERS**  
**DEPARTMENT OF THE ARMY**  
WASHINGTON, DC, 22 July 1977

**DIRECT SUPPORT AND GENERAL SUPPORT MAINTENANCE**  
**REPAIR PARTS AND SPECIAL TOOLS LIST**  
**(INCLUDING DEPOT MAINTENANCE REPAIR PARTS AND SPECIAL TOOLS)**  
**FOR**

**MOTOR-GENERATOR PU-542/A**

**(NSN 6125-00-888-3056)**

*Current as of 19 April 1977*

**REPORTING OF ERRORS**

You can improve this manual by recommending improvements using DA Form 2028-2 (Test) located in the back of the manual. Simply tear out the self addressed form, fill it out as shown on the sample, fold it where shown, and drop it in the mail.

If there are no blank DA Forms 2028-2 (Test) in the back of your manual, use the standard DA Form 2028 (Recommended Changes to Publications and Blank Forms) and forward to the Commander, US Army Electronics Command, ATTN: DRSEL-MA-Q, Fort Monmouth, NJ 07703.

In either case, a reply will be furnished direct to you.

TABLE OF CONTENTS

	PAGE	ILLUS FIGURE
SECTION I. INTRODUCTION	1	
II. REPAIR PARTS LIST	5	
GROUP 00 MOTOR GENERATOR PU-50B/A	5	1, 2
01 REGULATOR, VOLTAGE AND FREQUENCY	13	3
SECTION III. SPECIAL TOOLS LIST (NOT APPLICABLE)		
IV. NATIONAL STOCK NUMBER AND PART NUMBER INDEX	14	

\* This manual supersedes as much of TM 11-6125-246-34P 24 April 1967, including Change 1 27 June 1967 as pertains to repair parts and special tools list.

SECTION I

INTRODUCTION

1. SCOPE

al lists spares and repair parts; special tools; special test, measurement, and diagnostic equipment (TMDE), and other special support equipment required for performance of direct support and general support maintenance of the PU-WA. It authorizes the requisitioning and issue of spares and repair parts as indicated by the source and maintenance codes.

2. GENERAL

This repair parts and special tools list is divided into the following sections:

*a. Section II Repair Parts List.* A list of spares and repair parts authorized for use in the performance of maintenance. The list also includes parts which must be removed for replacement of the authorized parts. Parts lists are composed of functional groups in numeric sequence, with the parts in each group listed in figure and item number sequence.

*b. Section III Special Tools List.* Not applicable.

I

*c. Section IV National Stock Number and Part Number Index.* A list, in National item identification number (NIIN) sequence, of all National stock numbers (NSN) appearing in the listings, followed by a list, in alphabetic sequence, of all part numbers appearing in the listings. National stock numbers and part numbers are cross-referenced to each illustration figure and item number appearance.

3. EXPLANATION OF COLUMNS

*a. Illustration.* This column is divided as follows:

(1) *Figure number* Indicates the figure number of the illustration on which the item is shown.

(2) *Item number* The number used to identify item called out in the illustration

*b. Source, Maintenance, and Recoverability (SMR) Codes*

(1) *Source code.* Source codes indicate the manner of acquiring support items for maintenance, repair, or overhaul of end items. Source codes are entered in the first and second positions of the Uniform SMR Code format as follows:

<i>Code</i>	<i>Definition</i>
PA--	Item procured and stocked for anticipated or known usage.
XI&A	support item that is not stocked. When required, item will be procured through normal supply channels.

NOTE

Cannibalization or salvage may be used as a source of supply for any items source coded above except those coded XA and aircraft support items as restricted by AR 700-42.

(2) *Maintenance code.* Maintenance codes are assigned to indicate the levels of maintenance authorized to USE and REPAIR support items. The maintenance codes are entered in the third and fourth positions of the Uniform SMR Code format as follows:

(a) The maintenance code entered in the third position will indicate the lowest maintenance level authorized to remove, replace, and use the support item. The maintenance code entered in the third position will indicate one of the following levels of maintenance:

<i>Code</i>	<i>Application Explanation</i>
F--	Support item is removed, replaced, used at the direct support level.
H--	Support item is removed, replaced, used at the <b>general support</b> level.

(b) maintenance code entered in the fourth position indicates whether the item is to be repaired and identifies the lowest maintenance level with the capability to perform complete repair (i.e., all authorized maintenance functions). This position will contain one of the following **maintenance codes**:

<i>Code</i>	<i>Application/Explanation</i>
F--	The lowest maintenance level capable of complete repair of the support item is the direct support level.
Z--	Nonreparable. No repair is authorized.

(3) *Recoverability code* Recoverability codes are assigned to support items to indicate the disposition action on unserviceable items. The recoverability code is entered in the fifth position of the Uniform SMR Code format as follows:

<i>Recoverability codes</i>	<i>Definition</i>
Z--	Nonreparable item. When unserviceable, con-

## TM 11-6125-246-24P

demn and dispose at the level indicated in position 3.

F-Reparable item. When uneconomically reparable, condemn and dispose at the direct support level.

*c. National Stock Number.* Indicates the National stock number assigned to the item and will be used for requisitioning purposes.

*d. Part Number.* Indicates the primary number used by the manufacturer (individual, company, firm, corporation, or Government activity), which controls the design and characteristics of the item by means of its engineering drawings, specifications, standards, and inspection requirements to identify an item or range of items.

### NOTE

When a stock numbered item is requisitioned, the repair part received may have a different part number than the part being replaced.

*e. Federal Supply Code for Manufacturer (FSCM).* The FSCM is a s-digit numeric code listed in SB 703-42 which is used to identify the manufacturer, distributor, or Government agency, etc.

*f. Description.* Indicates the Federal item number and, if required, a minimum description to identify the item.

*g. Unit of Measure (U/M).* Indicates the standard of the basic quantity of the listed item as used in performing the actual maintenance function. This measure is expressed by a two-character alphabetical abbreviation (e.g., ea, in, pr, etc). When the unit of measure differs from the unit of issue, the lowest unit of issue that will satisfy the required units of measure will be requisitioned.

*h. Quantity Incorporated in Unit.* Indicates the quantity of the item used in the breakout shown on

the illustration figure, which is prepared for a functional group, subfunctional group, or an assembly.

## 4. Special Information

The following publication pertains to the PU-542/A and its components:

TM 11-6125-246-25, Motor-Generator PU-542/A

## 5. How to Locate

*a.* When National stock number or part number is unknown.

(1) *First.* Using the table of contents, determine the functional group within which the item belongs. This is necessary since illustrations are prepared for functional groups and listings are divided into the same groups.

(2) *Second.* Find the illustration covering the functional group to which the item belongs

(3) *Third.* Identify the item on the illustration and note the illustration figure and item number of the item.

(4) *Fourth.* Using the Repair Parts Listing, find the figure and item number noted on the illustration.

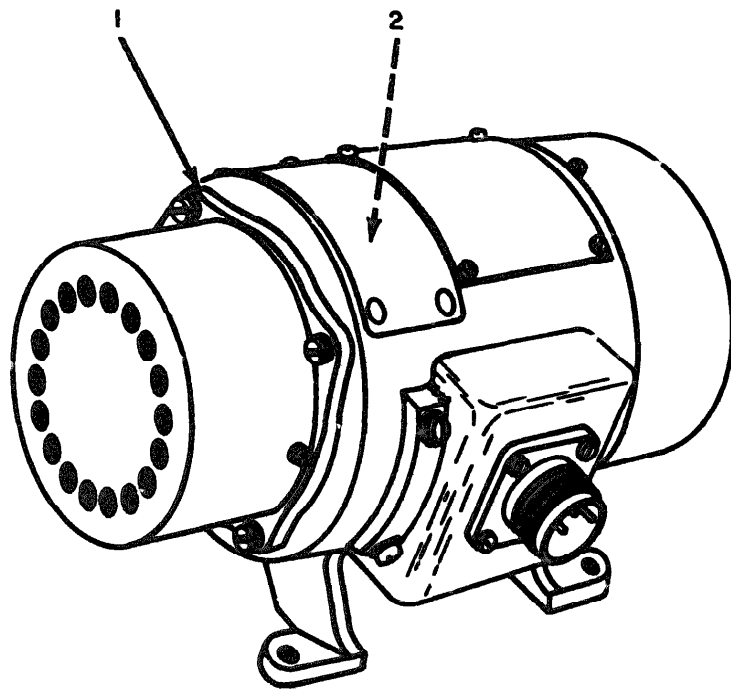
*b.* When National stock number or part number is known.

(1) *First.* Using the Index of National Stock Numbers and Part Numbers, find the pertinent National stock number or part number. This index is in NIIN sequence followed by a list of part numbers in alphabetic sequence, cross-referenced to the illustration figure number and item number.

(2) *Second.* After finding the figure and item number, locate the figure and item number in the repair parts list.

## 6. ABBREVIATIONS

Not applicable.



EL301001

Figure 1. Motor-Generator PU-542/A

SECTION II. REPAIR PARTS LIST

TM11-6125-246-34P

(1) DESCRIPTION		(2) SMR CODE	(3) NATIONAL STOCK NUMBER	(4) PART NUMBER	(5) FSCM	(6) DESCRIPTION	(7) U/M	(8) QTY INC IN UNIT
(a) FIG NO	(b) ITEM NO					USABLE ON CODE		
						GROUP 00 MOTOR-GENERATOR PU-542/A		
1	1	XDFF		1544729	83298	FND BELL,DC	EA	1
1	2	PAFF	6125-00-832-7937	1544567	83298	V-FREQ REGULATOR	EA	1

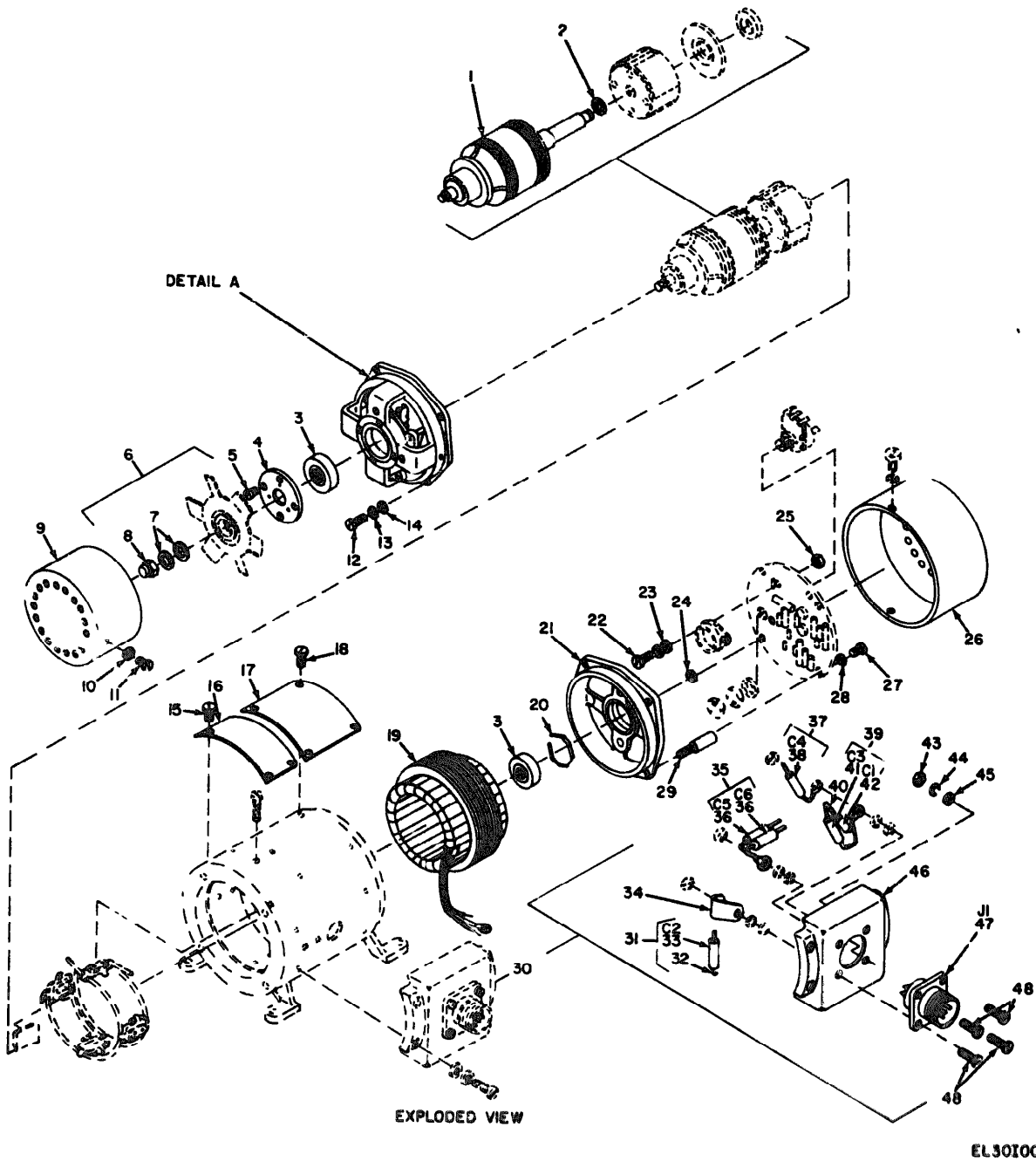
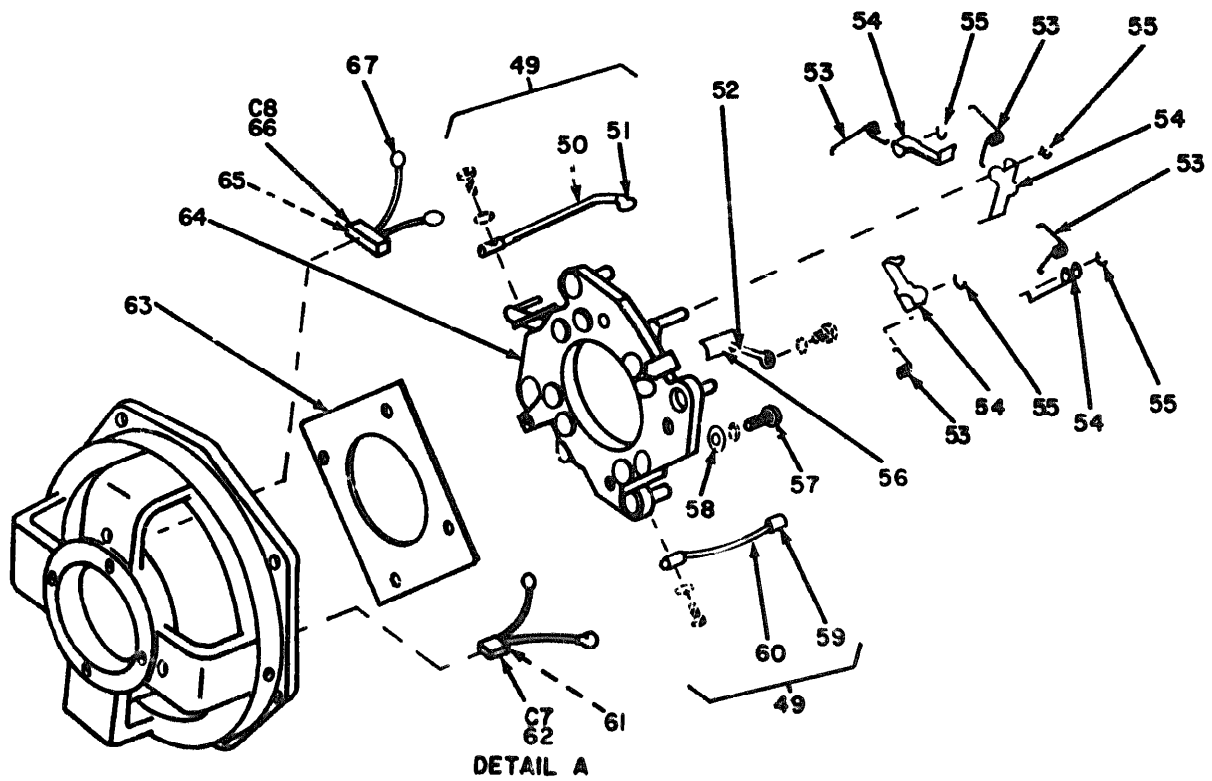


Figure 2. Motor-Generator PU-542/A (Sheet 1 of 2).

EL301002



EL301003

Figure 2. Motor-Generator PU-542/A (Sheet 2 of 2).



## SECTION II.

TM11-6125-246-34P

(1) ILLUSTRATION		(2)	(3)	(4)	(5)	(6)	(7)	(8)
(a) FIG NO.	(b) ITEM NO.	SMR CODE	NATIONAL STOCK NUMBER	PART NUMBER	FSCM	DESCRIPTION	U/M	QTY INC IN UNIT
						USABLE ON CODE		
2	1	PAFZZ	6125-00-032-7939	1544727	83298	ARMATURE	EA	1
2	2	XDFZZ		MWT-22	80063	WIRE MAGNET	EA	3
2	3	PAHZZ	3110-00-832-8351	1544722	83298	BEARING,BALL	EA	2
2	4	XDFZZ		5241-3	83298	PLATE,RETAINING	EA	1
2	5	XDFZZ		ANS10-4-5	88044	SCREW	EA	4
2	6	PAFZZ	4140-00-832-6966	1544725	83298	FAN ASSEMBLY	EA	1
2	7	XDFZZ		10187	12344	WASHER	EA	2
2	8	XDFZZ		MS2104214	96906	NUT, SELF-LOCKING	EA	1
2	9	XDFZZ		1544745	83298	COVER,DC	EA	1
2	10	XD L7		MS35337-40	96906	WASHER,LOCK	EA	2
2	11	XDFZZ		MS35266-13	96906	SCREW	EA	2
2	12	XDFZZ		MS35267-30	96906	SCREW	EA	4
2	13	XDFZZ		126876	18338	WASHER	EA	4
2	14	XDFZZ	5310-00-045-4007	MS35338-41	96906	WASHER,LOCK	EA	4
2	15	XDFZZ		MS35266-12	96906	SCREW	EA	4
2	16	XDFZZ	9905-00-061-7284	MS26515-1	96906	PLATE,IDENT	EA	1
2	17	XDFZZ		1544833	83298	PLATE,IDENT	EA	1
2	18	XDFZZ		ANS35-4-3	88044	SCREW	EA	4
2	19	PAFZZ	6129-00-832-7946	1544808	83298	STATOR,MOTOR-GEN	EA	1
2	20	XDHZZ		5480-1	83298	SPRING BEARING	EA	1
2	21	PAFZZ	6190-00-832-6968	1544734	83298	END BELL.AC	EA	1
2	22	XDFZZ		819106-116	80063	SCREW	EA	2
2	23	XDFZZ		1102665	83298	WASHER	EA	4
2	24	PAFZZ	5362-00-832-8262	92588-31	83298	RING,RETAINING	EA	1
2	25	XDFZZ	5310-00-013-4530	MS35649-62	96906	NUT	EA	2
2	26	XDFZZ		1545733	83298	COVER,AC	EA	1
2	27	XDFZZ		MS35267-27	96906	SCREW	EA	4
2	28	XDFZZ		12876	18338	WASHER	EA	4
2	29	PAFZZ	5970-00-832-7768	1544787	83298	STANDOFF	EA	4
2	30	XDFFF		1545698	83298	FILTER,RADIO	EA	1
2	31	XDFFF		1545702-8	83298	CAPACITOR ASSEMBLY	EA	1
2	32	XDFZZ		20-6220064	80063	SLEEVING	EA	4
2	33	PAFZZ	5910-00-832-7332	247K2223	96733	CAPACITOR	EA	1
2	34	XDFZZ		1532827-21	83298	CLAMP,LOOP	EA	1
2	35	XDFFF		1545699	83298	CAPACITOR ASSEMBLY	EA	1
2	36	PAFZZ	5910-00-832-732	70M3223	96733	CAPACITOR	EA	2
2	37	XDFFF		1545701	83298	CAPACITOR ASSEMBLY	EA	1
2	38	XDFZZ		TAM406R050POC	37942	CAPACITOR	EA	1
2	39	XDFFF		1545700	83298	CAPACITOR ASSEMBLY	EA	1
2	40	XDFZZ		30-6220064	80063	SLEEVING	EA	2

## SECTION II

TM11-6125-246-34P

(1) ILLUSTRATION		(2)	(3)	(4)	(5)	(6)	(7)	(8)
(a) FIG NO	(b) ITEM NO	SMR CODE	NATIONAL STOCK NUMBER	PART NUMBER	FSCM	DESCRIPTION	USABLE ON CODE	QTY INC IN UNIT
2	41	PAFZZ	5910-00-719-4370	192P33292	96289	CAPACITOR	EA	1
2	42	PAFZZ	5910-00-832-7329	70M224	96733	CAPACITOR	EA	1
2	43	XDFZZ		20501-44	83298	NUT	EA	3
2	44	XDFZZ	5310-00-543-241	MS35338-40	96906	WASHER-LOCK	EA	4
2	45	XDFZZ		AN960CAL	88044	WASHER	EA	3
2	46	XDFZZ		1544812	83298	ADAPTER,CONNECTOR	EA	1
2	47	PAFZZ	5935-00-801-6616	MS3102R-14S-7P	77820	CONNECTOR	EA	1
2	48	XDFZZ		MS35226-16	96906	SCR...	EA	4
2	49	XDFZZ		1546579	83298	LEAD ASSEMBLY	EA	2
2	50	XDFZZ		1544750-1	83298	LEAD,ELECTRICAL	EA	1
2	51	XDFZZ	5940-00-557-4398	MS25036-48	96906	TERMINAL	EA	2
2	52	PAFZZ	5977-00-832-7209	1118095	83298	BRUSH KIT	EA	1
2	53	PAFZZ	5360-00-527-1100	817980-1	83298	SPRING,BRUSH	EA	4
2	54	PAFZZ	6121-00-832-7941	5280-1	83298	BAR,PRESSURE	EA	4
2	55	XDFZZ		5867-1	83298	RING,LOCKING	EA	4
2	56	XDFZZ		1544789	83298	BRUSH,DC	EA	4
2	57	XDFZZ		MS35266-15	96906	SCREW	EA	4
2	58	XDFZZ	5310-00-167-0815	AN960-4	88044	WASHER	EA	4
2	59	XDFZZ		5261-1	83298	TERMINAL	EA	2
2	60	XDFZZ		741-8135151-53	80063	LEAD,ELECTRICAL	EA	1
2	61	XDFZZ		1546077	83298	CAPACITOR,FILTER	EA	1
2	62	XDFZZ		4M1334	96733	CAPACITOR,MICRO	EA	1
2	63	XDFZZ		5285-1	83298	SPACER,INSULATING	EA	1
2	64	PAFZZ	6125-00-832-7938	5273-4	83298	BOARD ASSY,BRUSH	EA	1
2	65	XDFZZ		1546580	83298	CAPACITOR,FILTER	EA	1
2	66	XDFZZ		YAM116R060P18	37942	CAPACITOR	EA	1
2	67	XDFZZ	5940-00-204-7864	34104	80779	TERMINAL	EA	2

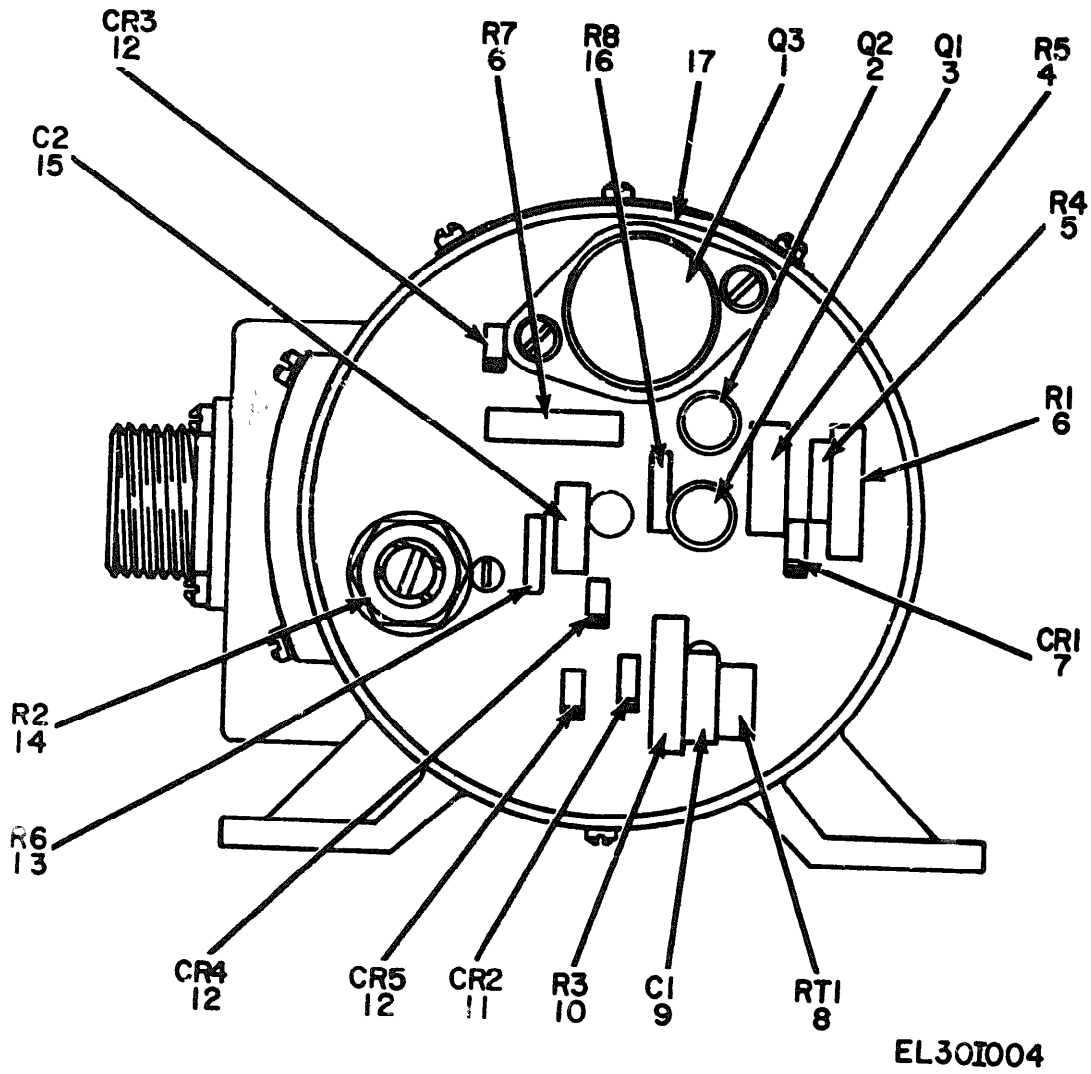


Figure 3. Regulator, Voltage and Frequency.

## SECTION II.

TM11-6125-246-34P

(1) ILLUSTRATION		(2)	(3)	(4)	(5)	(6)	(7)	(8)
(a) FIG NO.	(b) ITEM NO.	SMR CODE	NATIONAL STOCK NUMBER	PART NUMBER	FCM	DESCRIPTION	USABLE ON CODE	QTY INC IN UP-T
<b>GROUP 01 REGULATOR, VOLTAGE AND FREQUENCY</b>								
3	1	PAFZZ	5961-00-496-1661	2W3055	02735	TRANSISTOR	EA	1
3	2	PAFZZ	5961-00-491-1431	2N3969	07263	TRANSISTOR	EA	1
3	3	PAFZZ	5961-00-838-1141	2N396A	01295	TRANSISTOR	EA	1
3	4	PAFZZ	5905-00-832-6799	RS2B, 698H	91637	RESISTOR	EA	1
3	5	PAFZZ	5905-00-904-4409	MF5C, 103F	19701	RESISTOR	EA	1
3	6	XDFZZ		MF7C157F	19701	RESISTOR	EA	2
3	7	PAFZZ	5961-00-892-0889	1N936A	04713	SEMICONDUCTOR, DIODE	EA	1
3	8	PAFZZ	5905-00-832-6801	R1220-3, 651H	19909	RESISTOR	EA	1
3	9	PAFZZ	5910-00-792-8163	K2R2J35K	05397	CAPACITOR	EA	1
3	10	PAFZZ	5905-00-832-6799	MF7C, 4022F	19701	RESISTOR	EA	1
3	11	PAFZZ	5961-00-985-4900	1N647	81349	SEMICONDUCTOR, DIODE	EA	1
3	12	PAFZZ	5961-00-924-6981	JAN1M245	81349	SEMICONDUCTOR, DIODE	EA	3
3	13	PAFZZ	5905-00-832-6797	MF5C, 312F	19701	RESISTOR	EA	1
3	14	PAFZZ	5905-00-832-6800	AWAW-10K	11237	RESISTOR, ADJ	EA	1
3	15	XDFZZ		K33J6K	05397	CAPACITOR	EA	1
3	16	PAFZZ	5905-00-832-6793	MF5C, 348F	19701	RESISTOR	EA	1
3	17	XDFZZ		1544564	83298	BOARD, PRINTED C/P	EA	1

STOCK NUMBER  
 5310-00-013-4530  
 5310-00-045-4307  
 9905-00-857-7284  
 5310-00-187-0815  
 5940-00-204-7866  
 5961-00-491-1431  
 5961-00-496-1661  
 5360-00-527-1100  
 5310-00-543-2410  
 5940-00-557-4398  
 5910-00-719-4370  
 5910-00-792-8163  
 5935-00-801-6616  
 5905-00-832-6793  
 5905-00-832-6795  
 5905-00-832-6797  
 5905-00-832-6799

FIGURE NO. ITEM NO.  
 2 25  
 2 14  
 2 16  
 2 58  
 2 67  
 3 2  
 3 1  
 2 53  
 2 44  
 2 51  
 2 41  
 3 9  
 2 47  
 3 16  
 3 10  
 3 13  
 3 4

STOCK NUMBER  
 5905-00-832-6800  
 4140-00-832-6966  
 6150-00-832-6968  
 5910-00-832-7328  
 5910-00-832-7329  
 5910-00-832-7332  
 5970-00-832-7768  
 6125-00-832-7937  
 6125-00-832-7938  
 6125-00-832-7939  
 6125-00-832-7941  
 6125-00-832-7946  
 5365-00-832-8262  
 3110-00-832-8351  
 5961-00-838-1141  
 5961-00-892-0889  
 5905-00-904-4409

FIGURE NO. ITEM NO.  
 3 14  
 3 8  
 2 21  
 2 36  
 2 42  
 2 33  
 2 29  
 1 2  
 2 64  
 2 1  
 2 54  
 2 19  
 2 24  
 2 3  
 3 3  
 3 7  
 3 5

PART NUMBER  
 AN510-4-5  
 AN545-4-3  
 AN960-4  
 AN960CAL  
 K2R2J35K  
 K33J6K  
 MFC, 103F  
 MFC, 312F  
 MFC, 348F  
 MFC, 402F  
 MFC152F  
 MS204214  
 MS25036-48  
 MS2651-1  
 MS3102R-14S-7P  
 MS35226-16  
 MS35266-12  
 MS35266-13  
 MS35266-15  
 MS35267-27  
 MS35267-30  
 MS35377-40  
 MS5338-40  
 MS5338-41  
 9-62  
 RS2B.698H  
 RI278-3.651H  
 TANH6RO6OPIB  
 IN936A  
 10187  
 1102665  
 1118095  
 126876  
 1876  
 18338  
 1532827-21  
 1544564  
 1544567  
 1544722  
 1544725

FSCM FIG. NO. ITEM NO.  
 88044 2 5  
 88044 2 18  
 88044 2 58  
 88044 2 45  
 11237 3 14  
 05397 3 9  
 05397 3 15  
 19701 3 5  
 19701 3 13  
 19701 3 16  
 19701 3 10  
 19701 3 6  
 96906 2 8  
 96906 2 51  
 96906 2 16  
 77820 2 47  
 96906 2 43  
 95906 2 15  
 96906 2 11  
 96906 2 57  
 96906 2 27  
 96906 2 12  
 96906 2 10  
 96906 2 44  
 96906 2 14  
 96906 2 25  
 80063 2 2  
 91637 3 4  
 15909 3 8  
 37942 2 66  
 37942 2 38  
 04713 3 7  
 12344 2 7  
 83298 2 23  
 83298 2 52  
 18338 2 13  
 18338 2 28  
 83298 2 34  
 83298 3 17  
 83298 1 2  
 83298 2 3  
 83298 2 6

PART NUMBER  
 1544727  
 1544729  
 1544734  
 1544745  
 1544750-1  
 1544787  
 1544789  
 1544808  
 1544812  
 1544833  
 1545698  
 1545699  
 1545700  
 1545701  
 1545702-8  
 1545733  
 1546077  
 1546579  
 1546580  
 192P33292  
 20-6220064  
 20501-44  
 247K2223  
 30-6220064  
 34104  
 4M133  
 5241-3  
 5261-1  
 5273-4  
 5280-1  
 5285-1  
 5285-1  
 5867-1  
 70M224  
 70M3223  
 741-8135151-53  
 819106-116  
 817980-1  
 92588-31

FSCM FIG. NO. ITEM NO.  
 83298 2 1  
 83298 1 1  
 83298 2 2  
 83298 2 9  
 83298 2 50  
 83298 2 29  
 83298 2 56  
 83298 2 19  
 83298 2 46  
 83298 2 17  
 83298 2 30  
 83298 2 35  
 83298 2 39  
 83298 2 37  
 83298 2 31  
 83298 2 26  
 83298 2 61  
 83298 2 49  
 83298 2 65  
 56239 2 41  
 02735 3 1  
 01295 3 3  
 07263 3 2  
 80063 2 32  
 83298 2 43  
 96733 2 33  
 80063 2 40  
 00779 2 67  
 96733 2 62  
 83298 2 4  
 83298 2 59  
 83298 2 64  
 83298 2 64  
 83298 2 63  
 83298 2 20  
 83298 2 55  
 96733 2 42  
 96733 2 36  
 80063 2 60  
 80063 2 22  
 83298 2 53  
 83298 2 24

**LATEST NATIONAL STOCK NUMBER ASSIGNMENTS**

STOCK NUMBER	FIG. NO.	ITEM NO.
5977-00-832-7209	2	52
5961-00-924-6981	3	12
5961-00-985-4900	3	11

**LATEST PART NUMBER ASSIGNMENTS**

PART NUMBER	FSCM	FIG. NO.	ITEM NO.
JANIN4245	81349	3	12
IN647	81349	3	11

RECOMMENDED CHANGES TO EQUIPMENT TECHNICAL MANUALS



**SOMETHING WRONG WITH THIS MANUAL?**

THEN... JOT DOWN THE DOPE ABOUT IT ON THIS FORM, TEAR IT OUT, FOLD IT AND DROP IT IN THE MAIL!

FROM: (YOUR UNIT'S COMPLETE ADDRESS)

Commander  
Stateside Army Depot  
ATTN: AMSTA-UJ  
Stateside, N.J. 07703

DATE 10 July 1975

PUBLICATION NUMBER

TM 11-5840-340-12

DATE

23 Jan 74

TITLE

Radar Set AN/SPS-76

BE EXACT... PIN-POINT WHERE IT IS

PAGE NO.	PARA-GRAPH	FIGURE NO.	TABLE NO.
----------	------------	------------	-----------

2-25	2-28		
3-10	3-3	3-1	
5-6	5-8		

IN THIS SPACE TELL WHAT IS WRONG AND WHAT SHOULD BE DONE ABOUT IT:

Recommend that the installation antenna alignment procedure be changed throughout to specify a 2° IFF antenna lag rather than 1°.

REASON: Experience has shown that with only a 1° lag, the antenna servo system is too sensitive to wind gusting in excess of 20 knots, and has a tendency to rapidly accelerate and decelerate as it hunts, causing strain to the drive train. Hunting is minimized by adjusting the lag to 2° without degradation of operation.

Item 5, Function column. Change "2 db" to "3db."

REASON: The adjustment procedure for the TRANS POWER FAULT indicator calls for a 3 db (500 watts) adjustment to light the TRANS POWER FAULT indicator.

Add new step f.1 to read, "Replace cover plate removed in step e.1, above."

REASON: To replace the cover plate.

FO3 Zone C 3. On J1-2, change "+24 VDC to "+5 VDC."

REASON: This is the output line of the 5 VDC power supply. + 24 VDC is the input voltage.

TYPED NAME, GRADE OR TITLE, AND TELEPHONE NUMBER

SSG I. M. DeSpirito 999-1776

SIGN HERE:

*SSG I. M. DeSpirito*

DA FORM 2028-2 (TEST) 1 AUG 74

P.S.—IF YOUR UNIT WANTS TO KNOW ABOUT YOUR MANUAL "FIND" MAKE A CARBON COPY OF THIS AND GIVE IT TO YOUR HEADQUARTERS.

HISA 1686-75

TEAR ALONG DOTTED LINE

RECOMMENDED CHANGES TO EQUIPMENT TECHNICAL MANUALS



THEN... JOT DOWN THE DOPE ABOUT IT ON THIS FORM, TEAR IT OUT, FOLD IT AND DROP IT IN THE MAIL!

# SOMETHING WRONG WITH THIS MANUAL?

FROM: (YOUR UNIT'S COMPLETE ADDRESS)

DATE

PUBLICATION NUMBER

DATE

TITLE

BE EXACT... PIN-POINT WHERE IT IS

IN THIS SPACE TELL WHAT IS WRONG AND WHAT SHOULD BE DONE ABOUT IT:

PAGE NO.

PARA-GRAPH

FIGURE NO.

TABLE NO.

TEAR ALONG DOTTED LINE

TYPED NAME, GRADE OR TITLE, AND TELEPHONE NUMBER

SIGN HERE

DA FORM 1 AUG 74 2028-2 (TEST)

P.S.--IF YOUR OUTFIT WANTS TO KNOW ABOUT YOUR MANUAL "FIND," MAKE A CARBON COPY OF THIS AND GIVE IT TO YOUR HEADQUARTERS.





RECOMMENDED CHANGES TO EQUIPMENT TECHNICAL MANUALS



# SOMETHING WRONG WITH THIS MANUAL?

THEN... JOT DOWN THE DOPE ABOUT IT ON THIS FORM. TEAR IT OUT, FOLD IT AND DROP IT IN THE MAIL!

FROM: (YOUR UNIT'S COMPLETE ADDRESS)

DATE

PUBLICATION NUMBER

DATE

TITLE

BE EXACT... PIN-POINT WHERE IT IS

IN THIS SPACE TELL WHAT IS WRONG AND WHAT SHOULD BE DONE ABOUT IT:

PAGE NO.

PARA-GRAPH

FIGURE NO.

TABLE NO.

TEAR ALONG DOTTED LINE

TYPED NAME, GRADE OR TITLE AND TELEPHONE NUMBER

SIGN HERE

DA FORM 2028-2 (TEST)  
1 AUG 74

P.S.--IF YOUR OUTFIT WANTS TO KNOW ABOUT YOUR MANUAL "FIND," MAKE A CARBON COPY OF THIS AND GIVE IT TO YOUR HEADQUARTERS.

RECOMMENDED CHANGES TO EQUIPMENT TECHNICAL MANUALS



THEN... JOT DOWN THE DOPE ABOUT IT ON THIS FORM, TEAR IT OUT, FOLD IT AND DROP IT IN THE MAIL!

# SOMETHING WRONG WITH THIS MANUAL?

FROM (YOUR UNIT'S COMPLETE ADDRESS)

DATE

PUBLICATION NUMBER

DATE

TITLE

BE EXACT... PIN-POINT WHERE IT IS

IN THIS SPACE TELL WHAT IS WRONG AND WHAT SHOULD BE DONE ABOUT IT:

PAGE NO.	PARA-GRAPH	FIGURE NO.	TABLE NO.
----------	------------	------------	-----------

TEAR ALONG DOTTED LINE

TYPED NAME, GRADE OR TITLE AND TELEPHONE NUMBER

SIGN HERE:

DA FORM 2028-2 (TEST)  
AUG 64

P.S.--IF YOUR OUTFIT WANTS TO KNOW ABOUT YOUR MANUAL "FIND," MAKE A CARBON COPY OF THIS AND GIVE IT TO YOUR HEADQUARTERS.

FILL IN YOUR  
UNIT'S ADDRESS

FOLD BACK

DEPARTMENT OF THE ARMY

POSTAGE AND FEES PAID  
DEPARTMENT OF THE ARMY  
DOD-314



OFFICIAL BUSINESS  
PENALTY FOR PRIVATE USE, \$300

Commander  
US Army Electronics Command  
ATTN: DRSEL-MA-Q  
Fort Monmouth, New Jersey 07703

TEAR ALONG DOTTED LINE

FOLD BACK

REVERSE OF DA FORM 2026-2 (TEST)

FILL IN YOUR  
UNIT'S ADDRESS

FOLD BACK

DEPARTMENT OF THE ARMY

\_\_\_\_\_  
\_\_\_\_\_

OFFICIAL BUSINESS

PENALTY FOR PRIVATE USE, \$300

POSTAGE AND FEES PAID  
DEPARTMENT OF THE ARMY  
DOD-314



Commander  
US Army Electronics Command  
ATTN: DRSEL-MA-Q  
Fort Monmouth, New Jersey 07703

TEAR ALONG DOTTED LINE

FOLD BACK

FILL IN YOUR  
UNIT'S ADDRESS

FOLD BACK

DEPARTMENT OF THE ARMY

OFFICIAL BUSINESS  
PENALTY FOR PRIVATE USE, \$300

POSTAGE AND FEES PAID  
DEPARTMENT OF THE ARMY  
DOD-314



Commander  
US Army Electronics Command  
ATTN: DRSEL-MA-Q  
Fort Monmouth, New Jersey 07703

TEAR ALONG DOTTED LINE

FOLD BACK

FILL IN YOUR  
UNIT'S ADDRESS

FOLD BACK

DEPARTMENT OF THE ARMY

OFFICIAL BUSINESS  
PENALTY FOR PRIVATE USE, \$300

POSTAGE AND FEES PAID  
DEPARTMENT OF THE ARMY  
DOD-314



Commander  
US Army Electronics Command  
ATTN: DRSEL-MA-Q  
Fort Monmouth, New Jersey 07703

TEAR ALONG DOTTED LINE

FOLD BACK

**BERNARD W. ROGERS**  
*General, United States Army*  
*Chief of Staff*

**Official:**

**PAUL T. SMITH**  
*Major General, United States Army*  
*The Adjutant General*

**Distribution:**

To be distributed in accordance with DA Form 12-36, direct and general support maintenance requirements for PU-542.

**END**

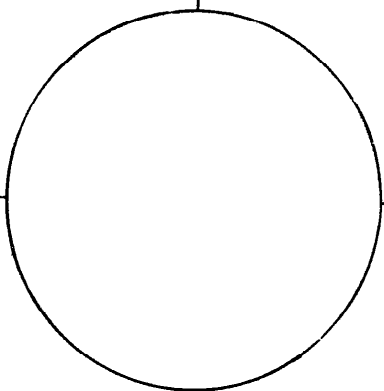
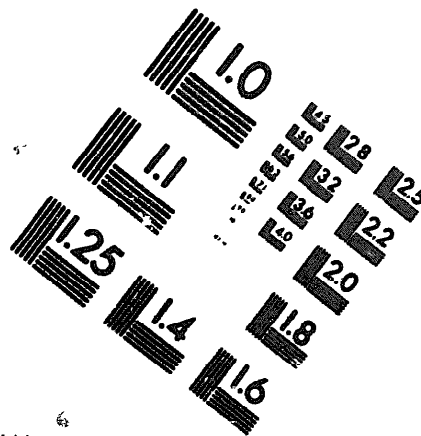
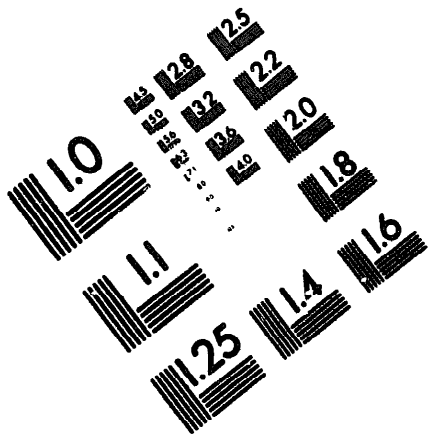
**7-25-83**

**DATE**





MICROFORM TEST TARGET



150 MM

1.0 mm (e= 81 mm)

ABCDEFGHIJKLMNPOQRSTUVWXYZ1234567890  
abcdefghijklmnopqrstuvwxyz\$%&/'%# 1/2 1/4 3/4 ---+ x&@\*

1.5 mm (e= 1 09 mm)

ABCDEFGHIJKLMNPOQRSTUVWXYZ1234567890  
abcdefghijklmnopqrstuvwxyz\$%&/'%# 1/2 1/4 3/4 ---+ x&@\*

2.0 mm (e= 1 37 mm)

ABCDEFGHIJKLMNPOQRSTUVWXYZ  
abcdefghijklmnopqrstuvwxyz  
1234567890\$%&/'%# 1/2 1/4 3/4 ---+ x&@\*

2.5 mm (e= 1.77 mm)

ABCDEFGHIJKLMNPOQRSTUVWXYZ  
abcdefghijklmnopqrstuvwxyz  
1234567890\$%&/'%# 1/2 1/4 3/4 ---+ x&@\*

1.0 mm (e= 8 mm)

ABCDEFGHIJKLMNPOQRSTUVWXYZ1234567890  
abcdefghijklmnopqrstuvwxyz\$%&/'%# 1/2 1/4 3/4 ---+ x&@\*

1.5 mm (e= 1 09 mm)

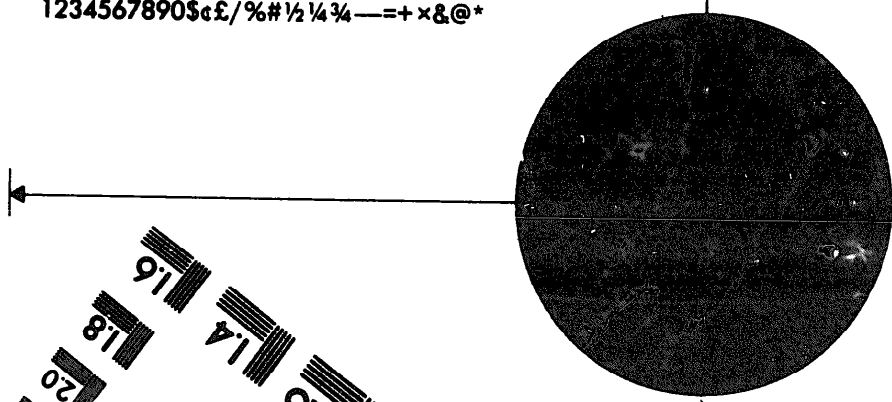
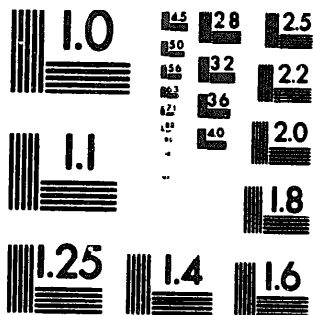
ABCDEFGHIJKLMNPOQRSTUVWXYZ1234567890  
abcdefghijklmnopqrstuvwxyz\$%&/'%# 1/2 1/4 3/4 ---+ x&@\*

2.0 mm (e= 1 37 mm)

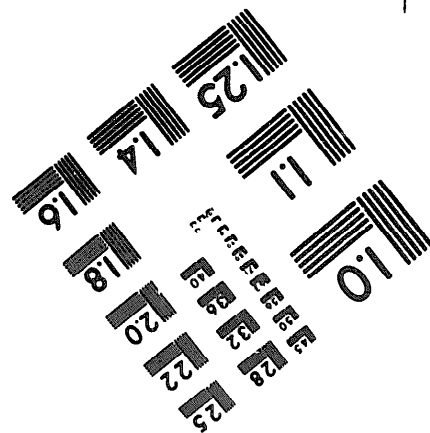
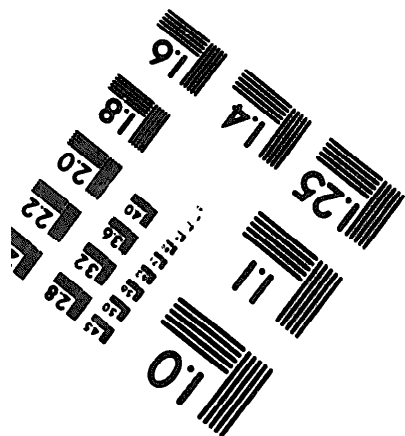
ABCDEFGHIJKLMNPOQRSTUVWXYZ  
abcdefghijklmnopqrstuvwxyz  
1234567890\$%&/'%# 1/2 1/4 3/4 ---+ x&@\*

2.5 mm (e= 1.77 mm)

ABCDEFGHIJKLMNPOQRSTUVWXYZ  
abcdefghijklmnopqrstuvwxyz  
1234567890\$%&/'%# 1/2 1/4 3/4 ---+ x&@\*



200 MM



250 MM

